

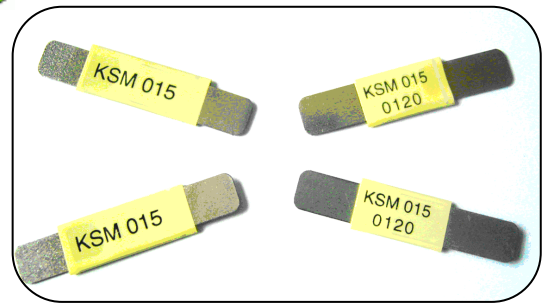
Polymer PTC Resettable Fuse: KSM Series



Strap Type KSM Series

■ Features

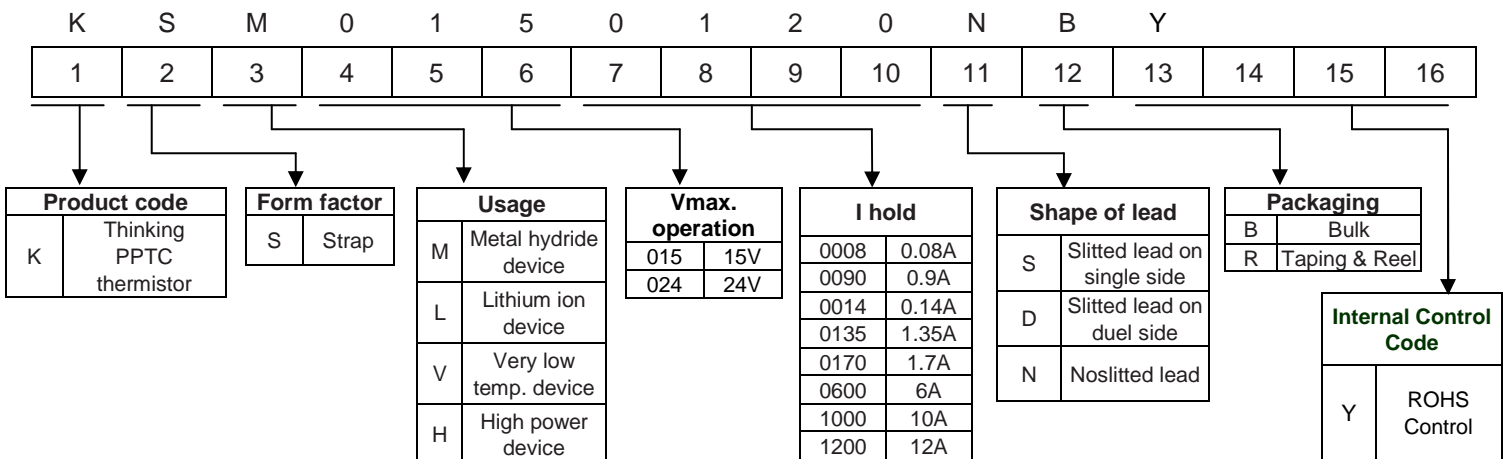
1. RoHS compliant
2. Broadest range of resettable devices available in the industry
3. Current ratings from 1.2 to 4.2A
4. Maximum voltage: 15V, 24V
5. Operating temperature range : -40 ~ +85°C
6. Agency Recognition :UL /cUL/TUV



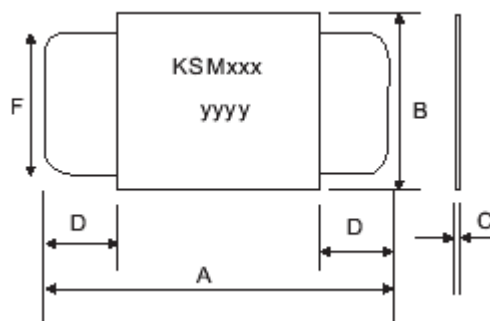
■ Recommended Applications

1. Rechargeable battery packs

■ Part No. Code



■ Dimensions



Marking: xxx=Vmax. operation, yyy=I hold

Polymer PTC Resettable Fuse: KSM Series

Strap Type KSM Series



(Unit: mm)

Part no.	A		B		C		D		F	
	Min.	Max.	Min.	Max.	Min.	Max.	Min.	Max.	Min.	Max.
KSM0150120	19.9	22.1	4.9	5.2	0.6	1.0	5.5	7.5	3.9	4.1
KSM0150175	20.9	23.1	4.9	5.2	0.6	1.0	4.1	5.5	3.9	4.1
KSM0240200	21.3	23.4	10.2	11.0	0.6	1.0	5.0	7.6	4.8	5.4
KSM0240350	28.4	31.8	13.0	13.5	0.6	1.0	6.3	8.9	6.0	6.6
KSM0240420	30.6	32.4	12.9	13.6	0.6	1.0	5.0	7.5	6.0	6.7

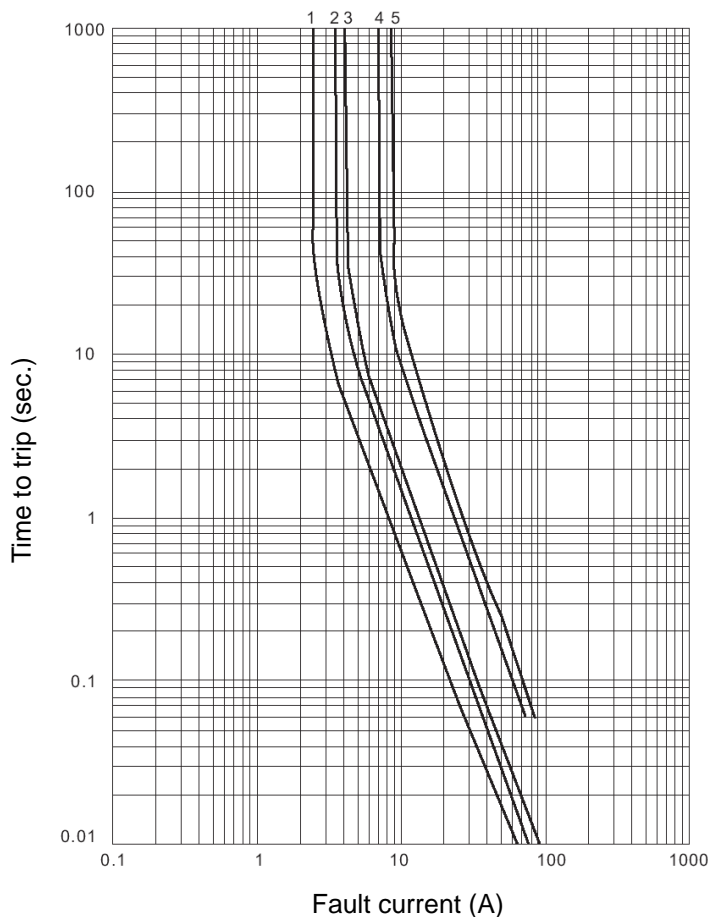
■ Characteristics(23°C)

Part no.	Vmax.	I _{max.}	I _{hold} @ 23°C	I _{trip} @ 23°C	P _d (Max.)	Maximum time to trip		Resistance (Ω)			Safety approvals	
	(V _{dc})	(A)	(A)	(A)	(W)	(A)	(Sec.)	Initial (R _i)		Post trip (R ₁)	UL/cUL	TUV
								Min.	Max.	Max.		
KSM0150120	15	100	1.20	2.70	1.20	6.00	5.0	0.085	0.160	0.220	√	√
KSM0150175	15	100	1.75	3.80	1.50	9.00	4.0	0.050	0.090	0.120	√	√
KSM0240200	24	100	2.00	4.40	1.90	10.00	4.0	0.030	0.060	0.100	√	√
KSM0240350	24	100	3.50	6.30	2.50	20.00	3.0	0.017	0.031	0.050	√	√
KSM0240420	24	100	4.20	7.60	2.90	20.00	6.0	0.012	0.024	0.040	√	√

Note : UL&cUL File No. E138827

TUV File No. R50066599

■ Typical time to trip curve at 23°C

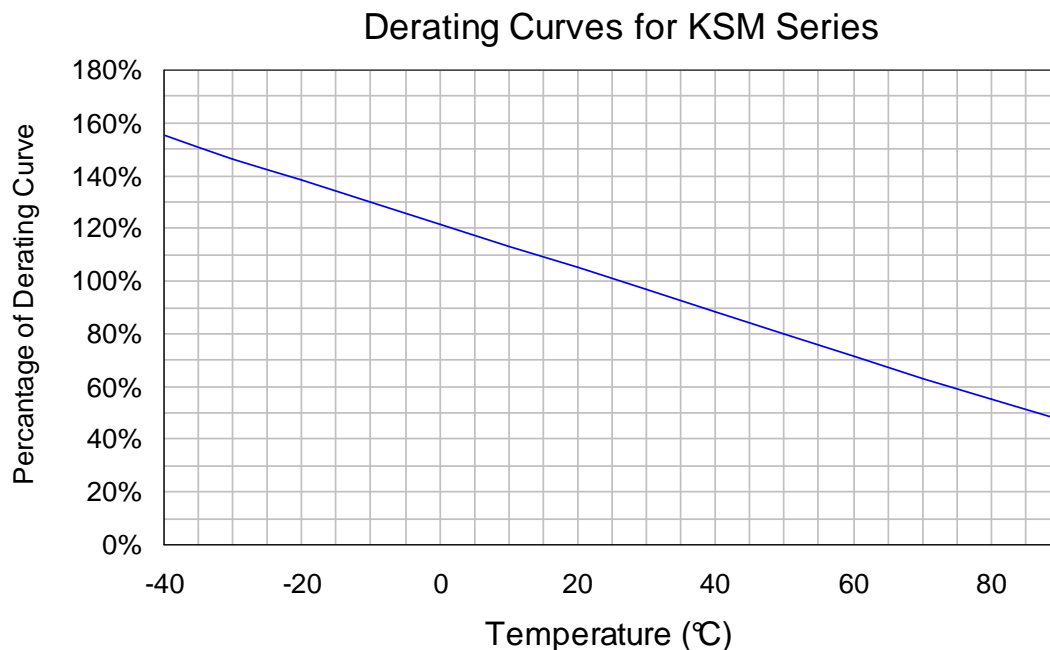


Polymer PTC Resettable Fuse: KSM Series

Strap Type KSM Series



■ Thermal derating curve



■ Reliability test

Item	Test condition/methods	Criteria
Passive aging	70°C, 1000hrs	±10% typical resistance change
Humidity storage	40°C, 95%RH, 1344hrs Mil-Std 202, method 103 condition D	±5% typical resistance change
Cycle life	50 cycles at a 120% maximum current (I_{max}) and maximum voltage (V_{max}). UL 1434	Normal Appearance
Trip endurance	V_{max} , I_{max} , 48Hrs	Normal Appearance
Steady-state operating life	V_{max} , I_{ss} , 1000hrs Mil-Std 750, method 1026	Normal Appearance

Polymer PTC Resettable Fuse: KSM Series

Strap Type KSM Series



■ Packaging

Bulk packing

Series	Quantity PCS/Bag
KSM (0120~0175)	1000
KSM (0200~0420)	500

Ammo packing

Series	Quantity PCS/Box
KSM (0120~0175)	10000
KSM (0200~0420)	5000

Carton packing

Series	Quantity PCS/Box
KSM (0120~0175)	60000
KSM (0200~0420)	30000

■ Storage condition of products

(I) Storage Conditions :

- 1.Storage Temperature : $-10^{\circ}\text{C} \sim +40^{\circ}\text{C}$
- 2.Relative humidity : $\leq 75\% \text{RH}$
- 3.Thermistors must be kept away from sunlight and stored in a non-corrosive atmosphere.

(II) Period of Storage : 1 year